

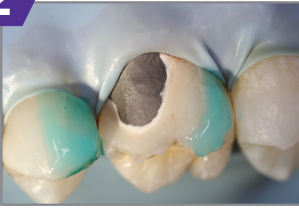
# INTRAORAL REPAIR KIT

## Repair of Porcelain-Fused-to-Metal or Zirconia/Alumina Restorations

1

Isolate the area to be repaired. Remove the glaze and bevel (45 degrees) the porcelain around the area to be repaired. Sandblast or abrade with a coarse diamond bur. Rinse with water and air dry.

2



Place **Barrier Gel** on the gingival tissue and porcelain to protect areas where etching is not desired.

3



Apply **9.5% Porcelain Etchant** to the dry porcelain surface for 90 seconds. Suction the etchant with high volume evacuation, then rinse with water and air dry. The etched porcelain should appear dull and frosty.

4



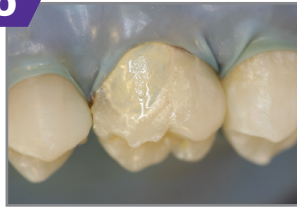
Apply 1 coat of silane (**Porcelain Primer**) to the etched porcelain and allow to dwell for 30 seconds. Dry with (warm) air syringe.

5



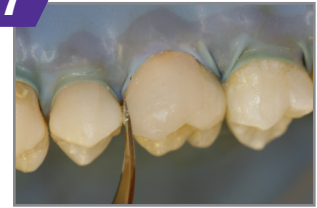
Apply 1 coat of **Z-Prime™ Plus** to the exposed metal/zirconia/alumina and dry with an air syringe for 3-5 seconds.

6



If metal masking is required, use **Dual-Cured Opaquer Base and Catalyst**, one drop of each, onto a mixing pad and mix with a brush tip. Apply a thin coat of the mixture only to the metal surface. allow to self cure, or light cure for 5 seconds.

7



Apply a thin layer of **Porcelain Bonding Resin** to the repair site. Apply a composite (i.e. **Quantium™**) to replace fractured porcelain and light cure, finish/polish.